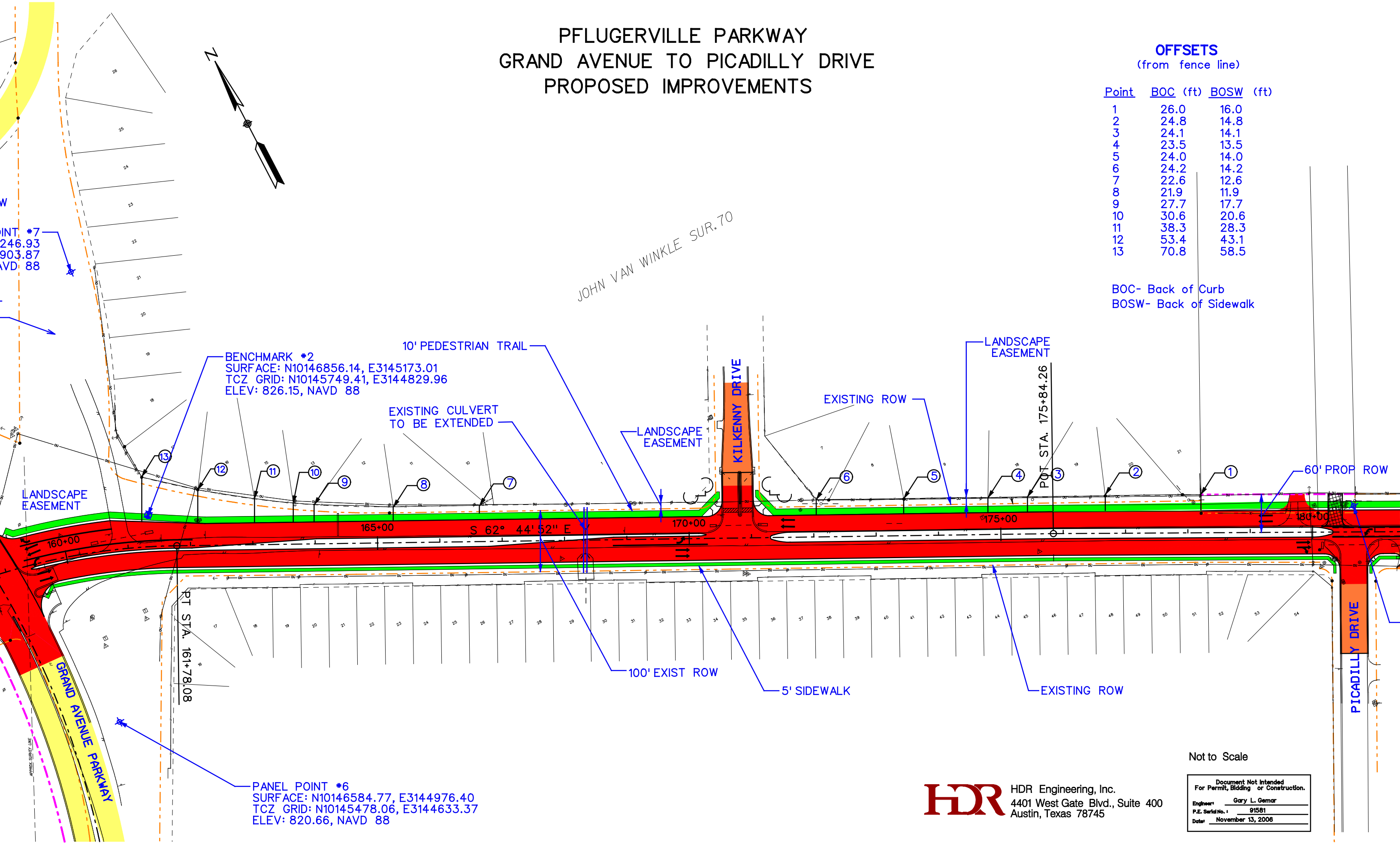


# PFLUGERVILLE PARKWAY GRAND AVENUE TO PICADILLY DRIVE PROPOSED IMPROVEMENTS

## OFFSETS (from fence line)

Point	BOC (ft)	BOSW (ft)
1	26.0	16.0
2	24.8	14.8
3	24.1	14.1
4	23.5	13.5
5	24.0	14.0
6	24.2	14.2
7	22.6	12.6
8	21.9	11.9
9	27.7	17.7
10	30.6	20.6
11	38.3	28.3
12	53.4	43.1
13	70.8	58.5

BOC- Back of Curb  
BOSW- Back of Sidewalk



BENCHMARK #2  
SURFACE: N10146856.14, E3145173.01  
TCZ GRID: N10145749.41, E3144829.96  
ELEV: 826.15, NAVD 88

PANEL POINT #7  
SURFACE: N10146584.77, E3144976.40  
TCZ GRID: N10145478.06, E3144633.37  
ELEV: 820.66, NAVD 88

LANDSCAPE EASEMENT

EXISTING CULVERT TO BE EXTENDED

LANDSCAPE EASEMENT

EXISTING ROW

LANDSCAPE EASEMENT

POT STA. 175+84.26

60' PROP ROW

S 62° 44' 52" E

100' EXIST ROW

5' SIDEWALK

EXISTING ROW

POT STA. 161+78.08

PANEL POINT #6  
SURFACE: N10146584.77, E3144976.40  
TCZ GRID: N10145478.06, E3144633.37  
ELEV: 820.66, NAVD 88

Not to Scale

**HDR** HDR Engineering, Inc.  
4401 West Gate Blvd., Suite 400  
Austin, Texas 78745

Document Not Intended  
For Permit, Bidding or Construction.  
Engineer: Gary L. Gemar  
P.E. Serial No.: 91581  
Date: November 13, 2006